

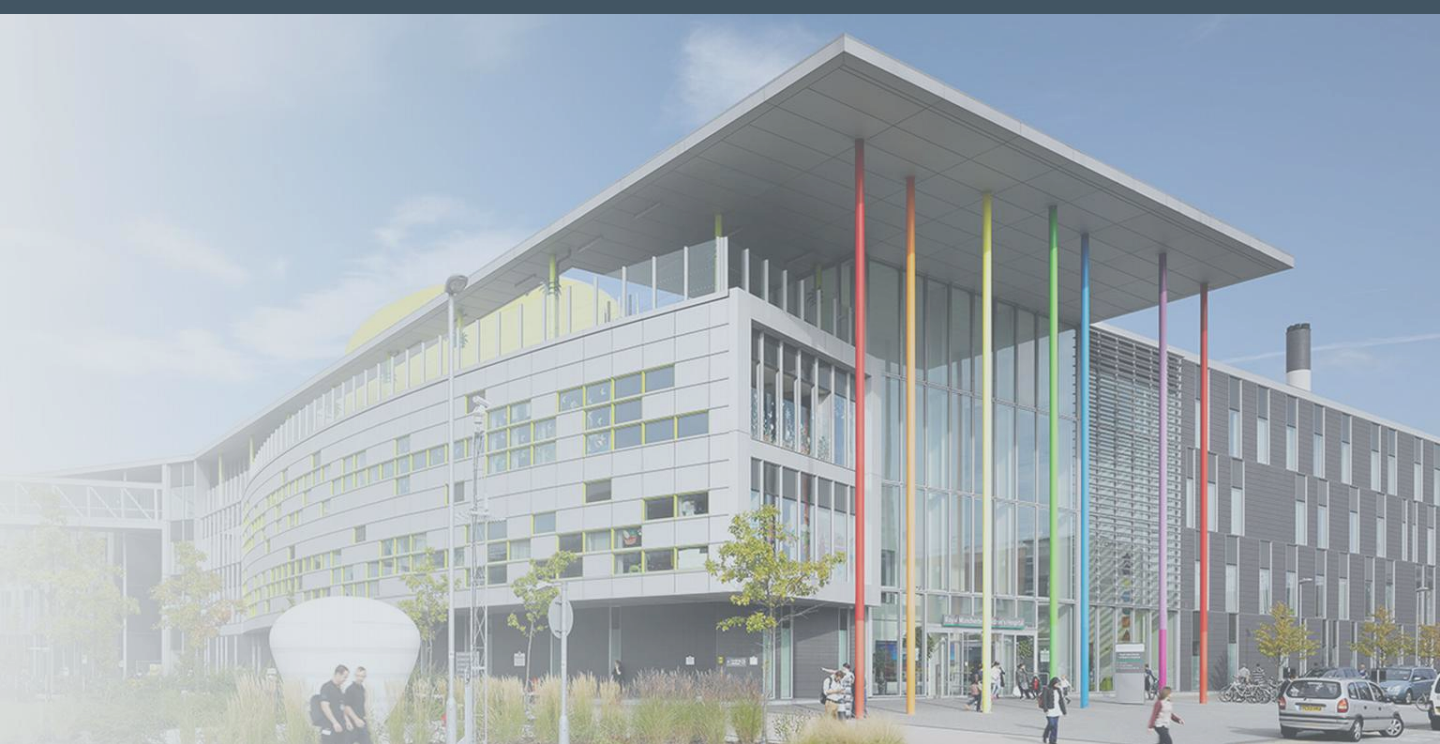
Global Talent Development

Our support for you

Expand your horizons

Develop your expertise

Experience world-class healthcare



Manchester University
NHS Foundation Trust

Overview

A timeline of your support



1

Welcome to Manchester

Meeting on arrival and seamless entry to the city

2

Understanding your new city

Introductions to local customs, activities and places to not miss

3

Navigating your work environment

Peer buddies, staff forums and hospital tours

4

Continuous practical and wellbeing support

Weekly check-ins, peer support, access to health and wellbeing services

5

Ongoing alumni engagement

Portfolio development, continued knowledge of opportunities

Before your arrival

A clear and supportive pathway to Manchester

Welcoming You

Once your placement is confirmed, you will receive a personalised welcome pack with details about your programme, department and Global Talent Development Manager. Also included is practical information about Manchester, accommodation, transport, and what to expect.

Virtual Orientation

Before you travel, you'll be invited to join an online orientation session. This is an opportunity to meet members of the team, connect with other incoming candidates, ask questions, and hear first-hand advice from previous fellows and observers.

Visa & Immigration

We support you through every step of the visa and immigration process. This includes guidance on required documentation, booking appointments, expected timelines, and what to anticipate at arrival. Our aim is to make the process as smooth and stress-free as possible.

Occupational Health

Prior to arrival you will receive support on the occupational health assessments, immunisations, and identity checks that are required before beginning your placement. Our team ensures you complete each step in good time so that you start your programme smoothly.

Accommodation

To help you settle, we can provide advice on short-term and long-term accommodation in Manchester. Whether its close access to world-famous football grounds, or easy use of the UK's best tram network, we can give guidance on suitable areas, rental costs, and securing your best home.

Peer Buddy *(fellows)*

Our strong peer support network helps you build connections and share expertise. All fellows are matched with a trained peer buddy - an international medical graduate who can offer personal insights, answer questions, and support you throughout your time with us.

Supporting you through

Guidance from day one of your placement

Meet and greet

Our meet-and-greet service ensures you feel supported from the moment you arrive in Manchester. You'll be welcomed at the airport by your peer buddy or a member of the team, and will have transport arranged to your accommodation, where possible. To help you settle quickly, we'll give you a Welcome Pack containing essentials and useful local information for your first days in the city.

Structured induction

Your induction gives you a clear and supportive introduction to the hospital, your department, and how the NHS works. As one of the largest Trusts in the UK, with over 28,000 staff, having a thorough induction will support your experience. You'll be guided through key areas such as communication, culture, safety and escalation pathways.



Wellbeing

Prioritising your wellbeing to ensure you thrive and maximise your experience is important. You'll have regular one to one check-ins with a member of our team to ensure you are continually getting the correct clinical and personal support to deal with challenges you may face promptly. Access to a variety of other wellbeing and safety information is available during your stay with us, to ensure your comfort.

your stay with us



Professional development

Your placement is just the beginning of your professional development. Our team will support with career planning, training and portfolio development. We can connect you to mentorship, coaching and appraisal processes. We complete your journey with an exit interview for you to share your experiences and feedback, and we welcome you into our alumni community, keeping you informed about new opportunities.

Social and local familiarity

Settling into life in Manchester is important. We offer tours around local areas, organise social activities and provide networking opportunities. We can also connect you with chaplaincy services, faith groups and other cultural associations. Your continued access to a peer buddy allows integration into staff networks, professional forums and alumni activities.



Looking beyond

Supporting your next steps and staying connected

Exit Review

You will be invited to a friendly and reflective review meeting. This is an opportunity to look back on your goals, discuss what you have gained from the experience, and share your thoughts on how we can continue to improve our programme for future participants.

Certification

To celebrate the end of your placement, you will receive an official certificate recognising your participation and contribution. This document confirms your placement dates, your engagement in our programme, and the experience you have gained in Manchester.

Transition *(fellows)*

For Fellows, we offer guidance to help you prepare for your next steps. This may include advice on onward training, references, verification letters, and signposting to opportunities that support your continued development or future NHS ambitions.

Staying Connected

You will join our global alumni community, where you can stay connected, hear about new opportunities, and take part in future events. This network keeps you linked to the wider Manchester community, wherever your journey takes you.



Here to support you throughout your journey and beyond your time with us.



Manchester University
NHS Foundation Trust

Hear from our alumni

Real insights from real experiences



"I am deeply grateful for my time at the prestigious Manchester University NHS Foundation Trust on their Fellowship Programme. The induction was smooth, the team welcoming, and the learning opportunities, both clinical and academic, were outstanding."

"Working alongside skilled clinicians and attending conferences helped me grow immensely as a doctor. I highly recommend this programme to any International Medical Graduate seeking excellent training and genuine support in the UK."

Arunath Visvalingam
International Fellow



We're here to help

If you have any questions about your placement or the support available to you, please get in touch. Whether you'd like information about wellbeing services, current clinical specialty projects, or even local recommendations in Manchester, we're here to help. Get in touch using the details below.



global.talent@mft.nhs.uk



[**Learn more about
Global Talent Development**](#)



[Learn more](#)